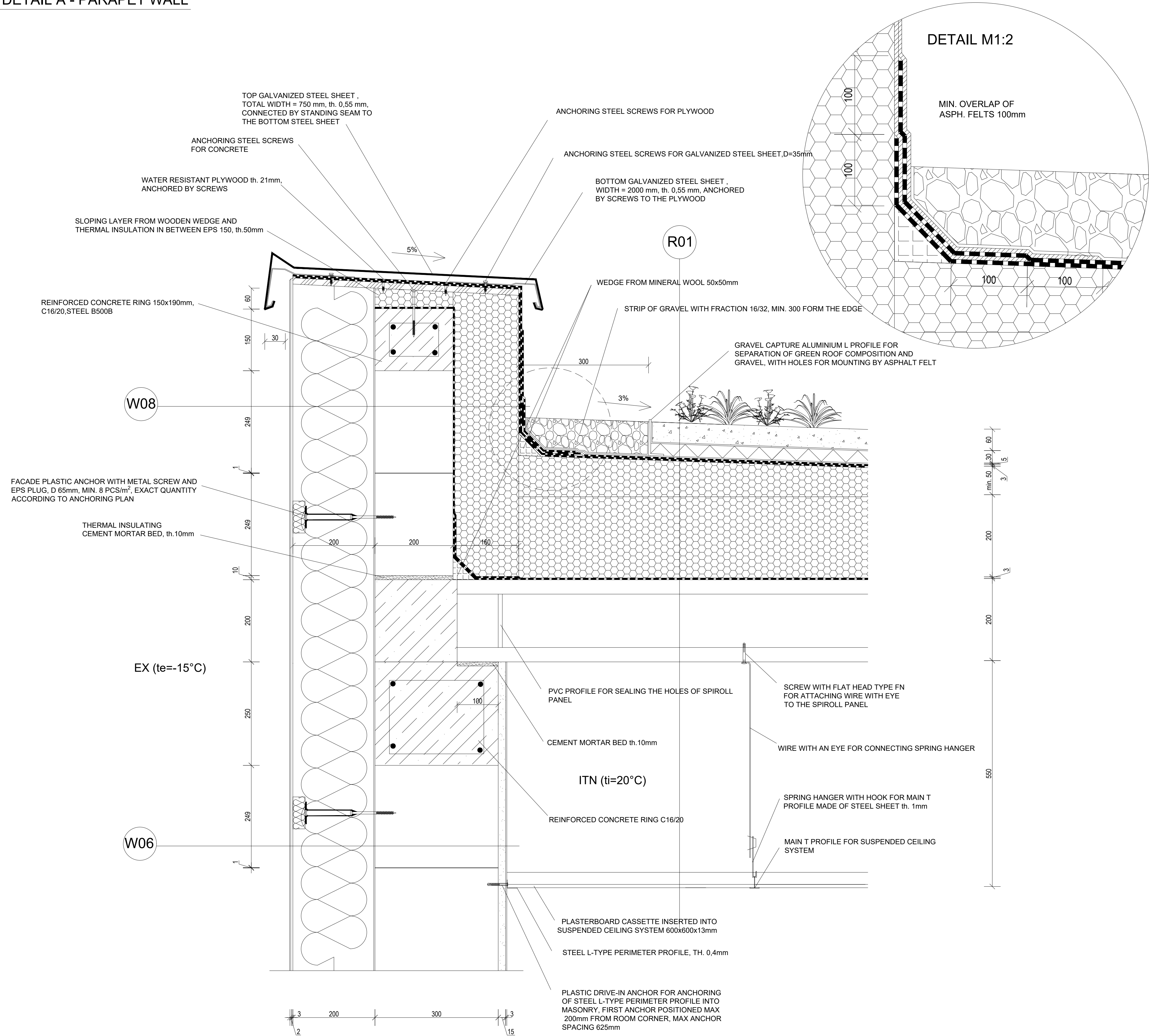


DETAIL A - PARAPET WALL



LEGEND OF MATERIALS:

- LOAD-BEARING WALL FROM CERAMIC BLOCKS POROTHERM 30 PROFI, th. 300mm, LxWxH 247x300x249mm, LAID ON THIN MORTAR JOINT, R<sub>w</sub>=48dB, REI 180 DP1
- FACADE THERMAL INSULATION FROM MINERAL WOOL, th.200mm, STRENGTH 30 kPa, λ<sub>p</sub>=0,034 W/mK
- THERMAL INSULATION FROM EXPANDED POLYSTYRENE EPS
  - ROOF INSULATION SLOPING BOARDS EPS 100, th. min 50mm, STRENGTH 100 kPa, λ<sub>p</sub>=0,036 W/mK
  - ROOF INSULATION BOARDS EPS 150, th. 2x100mm, STRENGTH 150 kPa, λ<sub>p</sub>=0,036 W/mK
  - ROOF INSULATION EPS 150 IN BETWEEN WOODEN WEDGES, th. 50-60mm, STRENGTH 150 kPa, λ<sub>p</sub>=0,036 W/mK
- WATER VAPOUR BARRIER - BITUMENOUS FELT TYPE S, th.3mm
- WATERPROOFING - 2 x SBS MODIFIED ASPHALT FELT, th. 8mm
- WASHED RIVER AGGREGATE - GRAVEL FRACTION 16/32
- SUBSTRATE LAYER - SAND AND TARF, th. 60mm
- SIMPLE INTENSIVE VEGETATION LAYER - SMALL PLANTS, SHRUBS
- PLYWOOD
- REINFORCED CONCRETE, C25/30, STEEL B50B
- PLAIN CONCRETE, C20/25

COMPOSITIONS

- W06
- SURFACE FINISH - SILICATE INTERIOR PAINT, 2-3 LAYERS (0,30kg/m<sup>2</sup>)
  - PENETRATION LAYER - PRIMER FOR SILICATE PLASTERS (0,25kg/m<sup>2</sup>)
  - SURFACE LAYER - FINISHING PLASTER - INTERNAL STUCCO PLASTER 3mm
  - BASE LAYER - CORE PLASTER - INTERNAL LIME-CEMENT PLASTER 15mm
  - LOAD-BEARING LAYER - BLOCKS POROTHERM 30 PROFI 300mm
  - PENETRATION PRIMER (0,25kg/m<sup>2</sup>)
  - ADHESIVE LAYER - MORTAR - APPLIED DIRECTLY ON EPS BLOCKS 5mm-15mm
  - THERMAL INSULATION - MINERAL WOOL - MECHANICALLY ANCHORED 200mm
  - LEVELING LAYER - MORTAR 5-15mm
  - REINFORCING LAYER - MORTAR WITH GLASS FIBRE MESH 3mm
  - PENETRATION PRIMER (0,25kg/m<sup>2</sup>)
  - FINISHING LAYER - THIN-LAYERED SILICONE FACADE PLASTER 2mm
- W08
- WATERPROOFING - 2x SBS MODIFIED ASPHALT FELT 8mm
  - THERMAL INSULATION - FACADE EXPANDED POLYSTYRENE EPS 160mm
  - WATER VAPOUR BARRIER - ASPHALT FELT TYPE S 4mm
  - PENETRATION LAYER - ASPHALT EMULSION -
  - LOAD-BEARING LAYER - BLOCKS POROTHERM 20 PROFI 200mm
  - PENETRATION PRIMER (0,25kg/m<sup>2</sup>)
  - ADHESIVE LAYER - MORTAR - APPLIED DIRECTLY ON MW BLOCKS 5-15mm
  - THERMAL INSULATION - MINERAL WOOL - MECHANICALLY ANCHORED 200mm
  - LEVELING LAYER - MORTAR 5-15mm
  - REINFORCING LAYER - MORTAR WITH GLASS FIBRE MESH 3mm
  - PENETRATION PRIMER (0,25kg/m<sup>2</sup>)
  - FINISHING LAYER - THIN-LAYERED SILICONE FACADE PLASTER 2mm
- R01
- VEGETATION LAYER - SMALL PLANTS 15-30mm
  - SUBSTRATE LAYER - SAND AND TARF 60mm
  - FILTRATION LAYER - PERMEABLE GEOTEXTILE 300g/m<sup>2</sup>
  - DRAINAGE AND WATER ACCUMULATION LAYER - HDPE MEMBRANE 30mm
  - SEPARATION LAYER - FOIL WITH FLL TEST -
  - WATERPROOFING TOP - SBS MODIFIED ASPHALT FELT 4mm
  - WATERPROOFING BOTTOM - SBS MODIFIED ASPHALT FELT 4mm
  - SLOPING LAYER - EPS 100S min.50mm
  - THERMAL INSULATION LAYER - 2X EPS 150S 200mm
  - WATER VAPOUR BARRIER - BITUMENOUS FELT TYPE S 4mm
  - PENETRATION LAYER - ASPHALT EMULSION -
  - LOAD-BEARING LAYER - SPIROLL PANEL 200mm
  - LOAD-BEARING CD PROFILES 100mm
  - UNVENTILATED AIR GAP -
  - CEILING - PLASTERBOARD CASSETTE 13mm

000 =240,24		m.a.s.l., B.H.S. / COORDINATE SYSTEM S-JTSK	
COURSE	DIPLOMA THESIS		
DRAWN BY	BARBORA HUSAROVÁ		
SUPERVISED BY	ING. JAN MÜLLER PH.D.		
INVESTOR			
LOCATION	POŘADÍ, 687 51 NIVNICE, PARCELS No. 65, 64, 63, 61, 57		
PROJECT TITLE	MUNICIPAL CENTRE IN NIVNICE		
BUILDING OBJECT	BO 01 MUNICIPAL CENTRE	PAPER FORMAT	780x594
PART	D.1.1 ARCHITECTURAL BUILDING SOLUTION	DATE	01/2025
DRAWING TITLE:	DETAIL A - PARAPET WALL	PROJ. PHASE	DPS
		SCALE	DRAWING NO.
		1:5	D.1.1.10